

Weldcraft™ A-200 Series

Formerly WP-26 Series

Hand-Held Air-Cooled
TIG Welding Torches



Quick Specs

Models

A-200
A-200 Valve
A-200 Flex
A-200 Flex Valve

A-200 Flex Redhead™
A-200 Flex Valve Redhead™

Applications

Fabrication
Maintenance and repair
Manufacturing
Shipbuilding
Vocational

Rated Output

DC: 200 A, AC: 150 A

Duty Cycle 60%

Electrode Range

.020–5/32 in. (0.5–4.0 mm)

A-200 Series TIG torches

Formerly known as the WP-26 Series, the A-200 Series consists of dependable, top-performing air-cooled torches designed for heavy-duty welding applications.

Eliminate the expense of a water-cooled system. The air-cooled capability pairs reliability with cost-effectiveness for all field applications.

Robust performance. The heavy copper construction delivers optimal welding capacity for rugged fieldwork.

Effortless adjustments. The A-200 Valve provides a gas control valve to ensure a quick, easy adjustment of shielding gas flow.

Flexibility. Using the A-200 Flex, the flexible neck easily adjusts to any angle for better torch control in limited-access joints.

Combining the flexible neck and gas valve advances capabilities with greater comfort and control (A-200 Flex Valve).

Maximum versatility. Utilize the Redhead Series torches in a variety of welding applications without adding expenses.

Note: Torches delivered may vary slightly from images shown.



A-200
(WP-26)

Additional torch models



A-200 Flex
(WP-26F)

A-200 Flex Valve
(WP-26FV)



A-200 Valve
(WP-26V)



A-200 Flex Redhead
(WP-R26F)



A-200 Flex Valve Redhead
(WP-R26FV)



Miller Electric Mfg. Co.
An ITW Welding Company
1635 West Spencer Street
P.O. Box 1079
Appleton, WI 54912-1079 USA

Equipment Sales US and Canada
Phone: 866-931-9730
FAX: 800-637-2315
International Phone: 920-735-4554
International FAX: 920-735-4125

MillerWelds.com
f t y i n



Torch Packages

Models		1-Piece Power Cable Standard Rubber		2-Piece Power Cable Rubber	
Old Model	New Name	12.5 ft. (3.8 m)	25 ft. (7.6 m)	12.5 ft. (3.8 m)	25 ft. (7.6 m)
WP-26	A-200	WP-26-12-R	WP-26-25-R	WP-26-12-2	WP-26-25-2
WP-26V	A-200 Valve	WP-26V-12-R	WP-26V-25-R	WP-26V-12-2	WP-26V-25-2
WP-26F	A-200 Flex	WP-26F-12-R	WP-26F-25-R	WP-26F-12-2	WP-26F-25-2
WP-26FV	A-200 Flex Valve	WP-26FV-12-R	WP-26FV-25-R	WP-26FV-12-2	WP-26FV-25-2
WP-R26F	A-200 Flex Redhead™	WP-R26F-12-R	—	—	WP-R26F-25-2
WP-R26FV	A-200 Flex Valve Redhead™	—	WP-R26FV-25-R	—	—

V = Valve F = Flex FV = Flex Valve

Torch packages include torch body, handle, power cable and long back cap.

Connectors

1-piece power cable connectors



194723
50 mm Dinse-style gas thru
for one-piece air-cooled torch.



195379
50 mm Dinse-style for
one-piece air-cooled torch.



45V62
Power cable adapter for
one-piece air-cooled torch.

2-piece power cable connector

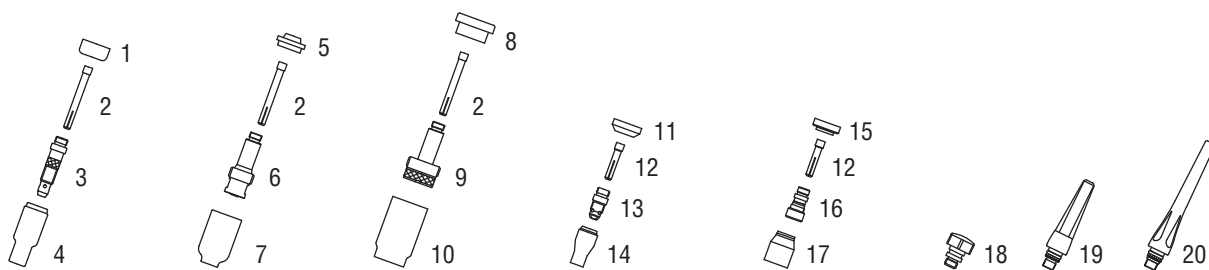


129527
50 mm Dinse-style for two-piece
cable air-cooled torch.

Machines	Connection Type	1-Piece Power Cable Connectors	2-Piece Power Cable Connectors
TIG Machines			
Syncrowave® 200/210	50 mm Dinse-style gas thru	194723	129527*
Syncrowave® 250 DX/350 DX (Dinse)	50 mm Dinse-style	195379	129527
Syncrowave® 250 DX/350 DX (stud)	1/2 in. stud	45V62	N/A
Dynasty® 200/210/280/350, Maxstar® 200/210/280/350	50 mm Dinse-style	195379	129527
Multiprocess Machines			
Dimension™ 302/452/NT 450/652	1/2 in. stud	45V62	N/A
PipeWorx	1/2 in. stud	45V62	N/A
XMT® 304/350	50 mm Dinse-style	195379	129527
XMT® 450	1/2 in. stud	45V62	N/A
Engine-Driven Machines			
Most Big Blue®, Trailblazer®, Bobcat™, Blue Star® and Wildcat® models	1/2 in. stud	45V62	N/A
Big Blue® 450 Duo CST	50 mm Dinse-style	195379	129527
General Reference			
	50 mm Dinse-style	195379	129527
	50 mm Dinse-style gas thru	194723	N/A
	1/2 in. stud	45V62	N/A
Other Adapter			
	Stud to dinse-style adapter	232728	

*2-piece power cable connector is not gas thru.

Consumables (Refer to Owner's Manual for additional replacement parts.)



Non-Gas Lens

Electrode Size — inch (mm)	.020 (0.5)	.040 (1.0)	1/16 (1.6)	3/32 (2.4)	1/8 (3.2)	5/32 (4.0)		
1 Insulator (required)	18CG	18CG	18CG	18CG	18CG	18CG		
2 Collet	10N21	10N22	10N23	10N24	10N25	54N20		
3 Collet Body	10N29	10N30	10N31	10N32	10N28	406488		
Nozzle Size — size # (inch)	4 (1/4)	5 (5/16)	6 (3/8)	7 (7/16)	8 (1/2)	10 (5/8)	12 (3/4)	Short
4 Alumina	10N50	10N49	10N48	10N47	10N46	10N45	10N44	—
* Long Alumina	—	10N49L	10N48L	10N47L	—	—	—	—
* Lava	105Z43	105Z42	105Z44	105Z45	08N78	08N79	08N80	—
* Long Lava	12N03	105Z60	12N02	105Z61	—	—	—	—

Gas Lens

Electrode Size — inch (mm)	.020 (0.5)	.040 (1.0)	1/16 (1.6)	3/32 (2.4)	1/8 (3.2)	5/32 (4.0)		
5 Insulator (required)	54N01	54N01	54N01	54N01	54N01	54N01		
2 Collet	10N21	10N22	10N23	10N24	10N25	54N20		
6 Gas Lens	45V29	45V24	45V25	45V26	45V27	45V28		
Nozzle Size — size # (inch)	4 (1/4)	5 (5/16)	6 (3/8)	7 (7/16)	8 (1/2)	10 (5/8)	12 (3/4)	Short
7 Alumina Gas Lens	54N18	54N17	54N16	54N15	54N14	—	—	54N19
* Long Gas Lens	—	54N17L	54N16L	54N15L	—	—	—	—

Large Diameter Gas Lens

Electrode Size — inch (mm)	.020 (0.5)	.040 (1.0)	1/16 (1.6)	3/32 (2.4)	1/8 (3.2)	5/32 (4.0)		
8 Insulator (required)	54N63	54N63	54N63	54N63	54N63	54N63		
2 Collet	10N21	10N22	10N23	10N24	10N25	54N20		
9 Large Diameter Gas Lens	45V0204	45V0204	45V116	45V64	995795	45V63		
Nozzle Size — size # (inch)	4 (1/4)	5 (5/16)	6 (3/8)	7 (7/16)	8 (1/2)	10 (5/8)	12 (3/4)	Short
10 Large Dia. Gas Lens	—	—	57N75	—	57N74	53N88	53N87	53N89
* Large Dia. Gas Lens-L	—	—	57N75L	—	57N74L	53N88L	53N87L	—
* Large Dia. Gas Lens-XL	—	—	57N75XL	—	57N74XL	53N88XL	53N87XL	—
* Large Dia. Gas Lens-XXL	—	—	57N75XXL	—	57N74XXL	53N88XXL	53N87XXL	—

Stubby Non-Gas Lens

Electrode Size — inch (mm)	.020 (0.5)	.040 (1.0)	1/16 (1.6)	3/32 (2.4)	1/8 (3.2)
11 Insulator (required)	18CG20	18CG20	18CG20	18CG20	18CG20
12 Stubby Collet	—	10N22S	10N23S	10N24S	10N25S
13 Stubby Collet Body	17CB20	17CB20	17CB20	17CB20	17CB20

Nozzle Size — size # (inch)	4 (1/4)	5 (5/16)	6 (3/8)	7 (7/16)	8 (1/2)	10 (5/8)	12 (3/4)	Short
14 Stubby Alumina	13N08	13N09	13N10	13N11	13N12	13N13	—	—

Stubby Gas Lens

Electrode Size — inch (mm)	.020 (0.5)	.040 (1.0)	1/16 (1.6)	3/32 (2.4)	1/8 (3.2)
15 Insulator (required)	17GLG20	17GLG20	17GLG20	17GLG20	17GLG20
12 Stubby Collet	—	10N22S	10N23S	10N24S	10N25S
16 Stubby Gas Lens	—	17GL040	17GL116	17GL332	17GL18

Nozzle Size — size # (inch)	4 (1/4)	5 (5/16)	6 (3/8)	7 (7/16)	8 (1/2)	10 (5/8)	12 (3/4)	Short
17 Alumina Gas Lens	53N58	53N59	53N60	53N61	53N61S	—	—	—

Back Caps

18 Short 57Y04	19 Medium 300M	20 Long 57Y02
----------------	----------------	---------------

*Not shown.

Tungsten

Tungsten for the most demanding TIG welding applications!

Available in four types and industry-standard diameters, our line of Weldcraft™ tungsten electrodes has undergone rigorous testing to ensure the highest quality and durability. Color-coded packages include ten 7-inch (175 mm) tungsten electrodes.

Note: Refer to manufacturer SDS sheets for proper preparation and safety. Use proper ventilation/capture during preparation. Refer to manufacturer warning regarding ventilation.



Type	Diameter in. (mm)	Part #	Type	Diameter in. (mm)	Part #
2% Ceriated (EWCe-2)			Pure (EWP)		
Performs well in DC welding and arc starting at low-current settings, and offers excellent performance in AC processes.	0.040 (1.0)	WC040X7	Forms a clean, balled end when heated and provides good arc stability for AC welding with a balanced or unbalanced squarewave or sine wave.	0.040 (1.0)	—
	1/16 (1.6)	WC116X7		1/16 (1.6)	WP116X7
	3/32 (2.4)	WC332X7		3/32 (2.4)	WP332X7
	1/8 (3.2)	WC018X7		1/8 (3.2)	WP018X7
	5/32 (4.0)	WC532X7		5/32 (4.0)	—
2% Lanthanated (EWLa-2)			Rare Earth (EWG)		
Provides excellent arc starting, arc stability and re-ignition, and less tip erosion in AC or DC welding. Can substitute for 2% Thoriated.	0.040 (1.0)	WL2040X7	Combines the best of all alloying elements, and provides excellent arc stability in AC or DC welding.	0.040 (1.0)	—
	1/16 (1.6)	WL2116X7		1/16 (1.6)	WG116X7
	3/32 (2.4)	WL2332X7		3/32 (2.4)	WG332X7
	1/8 (3.2)	WL2018X7		1/8 (3.2)	WG018X7
	5/32 (4.0)	WL2532X7		5/32 (4.0)	—

Replacement Parts

Torch Bodies		
A-200		WP-26
A-200 Valve		WP-26V
A-200 Flex		WP-26F
A-200 Flex Valve		WP-26FV
A-200 Redhead™ Flex		WP-R26F
A-200 Redhead™ Flex Valve		WP-R26FV
Handles		
A-200 (ribbed)		H-200R
A-200 Valve (knurled)		H-200
A-200 Flex (ribbed)		10N15R
A-200 Flex Valve (knurled)		10N15
Valve Knob		
All valve models		VS-1
Flex Head Only		
A-200 Flex/Flex Valve		26F
A-200 Redhead™ Flex/Flex Valve		R26F
Power Cables		
	12.5 ft. (3.8 m)	25 ft. (7.6 m)
1-Piece Rubber	46V28R	46V30R
2-Piece Rubber	46V28-2	46V30-2

Genuine Miller® Accessories

Accessory Kit AK3C
Includes one short back cap, one of each size (#5, #6, #8) alumina nozzle, and one of each size (1/16, 3/32, 1/8 inch) of the following: collet, collet body, and 7-inch 2% ceriated tungsten electrode.

Extension Kit EK325R 25 ft. (7.6 m), rubber

Cable Covers
WC-3-10 10 ft. (3 m)
WC-3-22 22 ft. (6.7 m)

Wireless Remote Foot Control 300429
For remote current and contactor control. Receiver plugs directly into the 14-pin receptacle of Miller machine. 90-foot (27.4 m) operating range.

Wireless Remote Hand Control 300430
For remote current and contactor control. Receiver plugs directly into the 14-pin receptacle of Miller machine. 300-foot (91.4 m) operating range.

RCC-14 Remote Contactor and Current Control 151086
East/west rotary-motion fingertip control attaches to TIG torch using two hook-and-loop fasteners. Includes 26.5-foot (8 m) cord with 14-pin plug.

RCCS-14 Remote Contactor and Current Control 043688
North/south rotary-motion fingertip control attaches to TIG torch using two hook-and-loop fasteners. Includes 26.5-foot (8 m) cord with 14-pin plug.

Distributed by:

